

Temperature at **KIMO**

www.kimo.fr
EUROPEAN MANUFACTURER

With 30-year experience, **KIMO** designs, manufactures and sells instruments. **KIMO** offers a wide range of temperature probes dedicated to measurement, control and regulation in industrial process, food industry and services.



Temperature probe manufacturer

Standard models available on stock or customized models on request. Whichever is your need, we have your probe.

> Pt 100 / Pt 1000 / NTC Probes

Probes with connection head, housing or cable...

> Thermocouple K / J / T / N Probes

Probes with connection head, housing, self-adhesive patch, mineral insulated...

> Probes for specific fields

Piping, compost, viticultural....

Customer Satisfaction

In order to meet with your requirements in terms of **Quality / Delivery time / Price**, we have finished products and assembly components available on stock.

Our production line, in accordance with ISO 9001 guideline, guarantees quality probes where every single manufacturing step has been perfectly **performed, controlled** and **validated**.

Our manufacturing facilities and our reactivity allow us to **manufacture and deliver your temperature probe in a very short time**.



Distributed by :



www.kimo.fr



KIMO - Export Department
Boulevard de Beaubourg - BP 48
Emerainville - F-77312 MARNE LA VALLEE Cedex 2 - France
Tél. +33 (0)1 60 06 69 25 - Fax +33 (0)1 60 06 69 29
Email : export@kimo.fr

No contractual document - We reserve the right to modify the characteristics of our products without prior notice.

Doc. Sondes de température - V1 - Anglais - 03/10

Temperature



Temperature probes



Temperature



www.kimo.fr
EUROPEAN MANUFACTURER

Probes with connection head

- Aluminium alloy/Noryl/Stainless steel head
- Stainless steel, heat resisting steel or mineral insulated sheath, Alard coating...
- Wire mounting : single pair (2, 3 or 4 wires) or multipair (4 or 6 wires)

Pt 100 / Pt 1000 / NTC
Thermocouple (K, J, T, N...)

Standard or
Custom-Made



ALU / Noryl / Stainless steel head

Precision probes for industrial fields

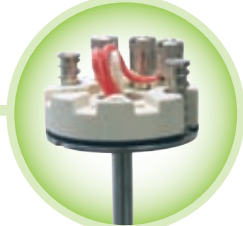


One need : One customized probe !
CONTACT US !



Remote compression fitting
Clamp compression fitting
Bent probe
Piping probe
Pyrometric probe

Probe with ambient tip...



Interchangeable
probe system

Wire probes

- Industry requirements
- Food-industry requirements
- Precision probes
- Wire mounting single pair (2, 3 or 4 wires) or multipair (4 or 6 wires)

Pt 100 / Pt 1000 / NTC
Thermocouple (K, J, T, N...)

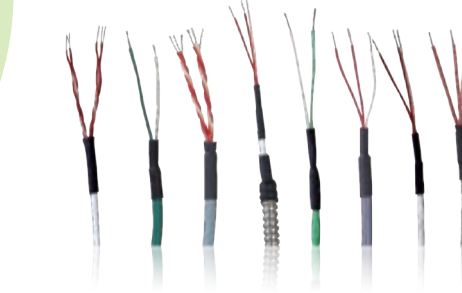
Standard or
Custom-Made



With handle
With pointer tip
With compression
fitting

Bent
With self-adhesive patch
With bayonet
fitting
For piping

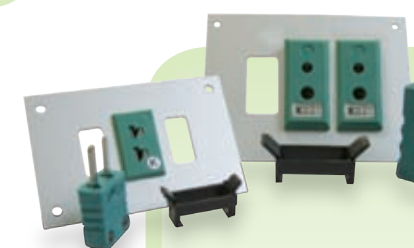
For contact...



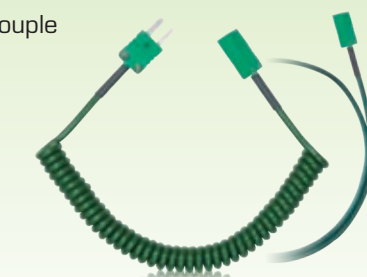
Cable and outputs

PVC / Silicone / Teflon® / Glass silk cable
Stainless steel hose (with or without shielding)
Pt 100 / Pt 1000 / NTC / Thermocouple
2, 3 or 4 wires outputs (Single or multipair wire
mounting)

Accessories & consumables



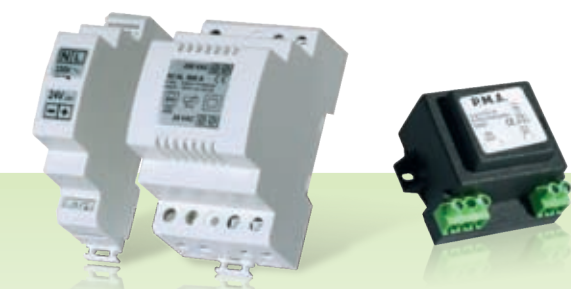
- Thermocouple connectors (K, J, T, N...)
- Miniature or standard panel sockets
- Connector panels
- Coiled thermocouple extension leads



- Converters / transmitters (4-20 mA / 0-10 V / 2 wires output)



- Adjustable ring
- Adjustable compression fitting
- Mounting brackets
- Wall fixing support



- Power supply Class 2 (Alternating or direct current)

- 316L stainless steel thermowell



- Compensating cable
- Extension cable

Special requests

Assembling components, compression fittings, mounting brackets, thermowell, miniature or standard panels sockets...

ABS head

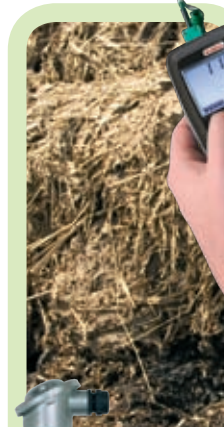
Pt 100 / 0-10 V / 4-20 mA output...



- With or without display
- Duct mount, remote or ambient-end probe
- Quick and easy mounting

Probes for specific fields

Viticultural / Food industry / Compost...



Temperature datalogger
version >>>
Portable thermometer
version

STKP
Special biomass

- From -50 to +400°C
- Length from 1000 to 2000mm
- Stainless steel protection sheath

Pt 100
NTC
Thermocouple

